

JOSHUA  JAMES
CONTEMPORARY GLASS SPECIALISTS

JOSHUA JAMES LTD
INOCROSS20 BROCHURE | 2023/24





Handcrafted by
us to last you a
lifetime

At Joshua James Ltd, our InoCross20 door range offers the perfect solution for any internal opening. Our product range stems from fixed screens to double doors, from sliding to single doors. Our doors provide a high end finish offering a luxury feel to any property.

OUR STORY

From the directors to the installation team, Joshua James has a wealth of knowledge and experience in both the residential and commercial glazing industry. The installation team have over 50 years of hands on experience making the process seamless and straightforward.

The company's mission is simple yet effective, to provide high quality, slimline steel glazed doors with an unrivalled level of customer service. Taking a modern approach to a traditional style.

Originally specialising in commercial glazing, Joshua James witnessed an increasing demand for Cross Bar glazing within residential properties. With widely available aluminium doors having so many flaws such as visible joints, bulky profile thickness and durability issues it was a no brainer to take it back to the drawing board and create a stylish, slimline, steel system, and from this their InoCross20 system was born.

As of today, Joshua James is very proud to be one of the leading UK suppliers of luxury internal steel doors, partnering with homeowners, architects and interior designers to provide a gold standard of quality and service from start to finish.





CONTENTS:

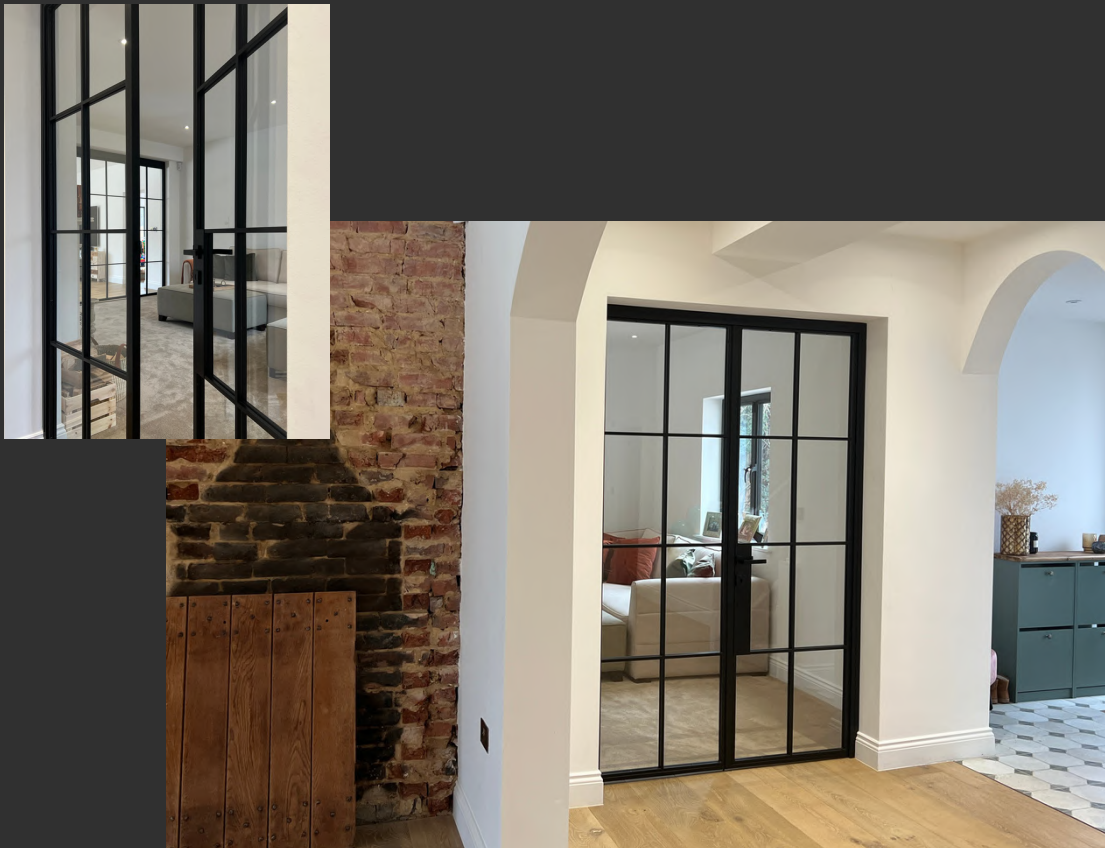
7	Overview	
8	Single Hinged Doors	InoCross20
10	Single Hinged Doors with Side Screen(s)	InoCross20
12	Double Hinged Doors	InoCross20
14	Double Hinged Doors with Side Screen(s)	InoCross20
18	Single Sliding Doors	InoCross20 Sliding
20	Single Sliding Doors with Side Screen(s)	InoCross20 Sliding
22	Double Sliding Doors	InoCross20 Sliding
24	Double Sliding Doors with Side Screen(s)	InoCross20 Sliding
26	Handle Options	
28	Class Types	
32	RAL Colours	



InoCross20

Overview

Our InoCross20 doors and fixed screens present an ideal solution for both traditional and modern homes, delivering a luxurious finish to any property. Each of our doors are meticulously handcrafted from cold-rolled steel, offering some of the slimmest profiles available and tailored to meet the specific requirements of each project. With a sleek design that optimizes the flow of natural light, these doors take up minimal space, creating a spacious feel in any room.



What's hot?

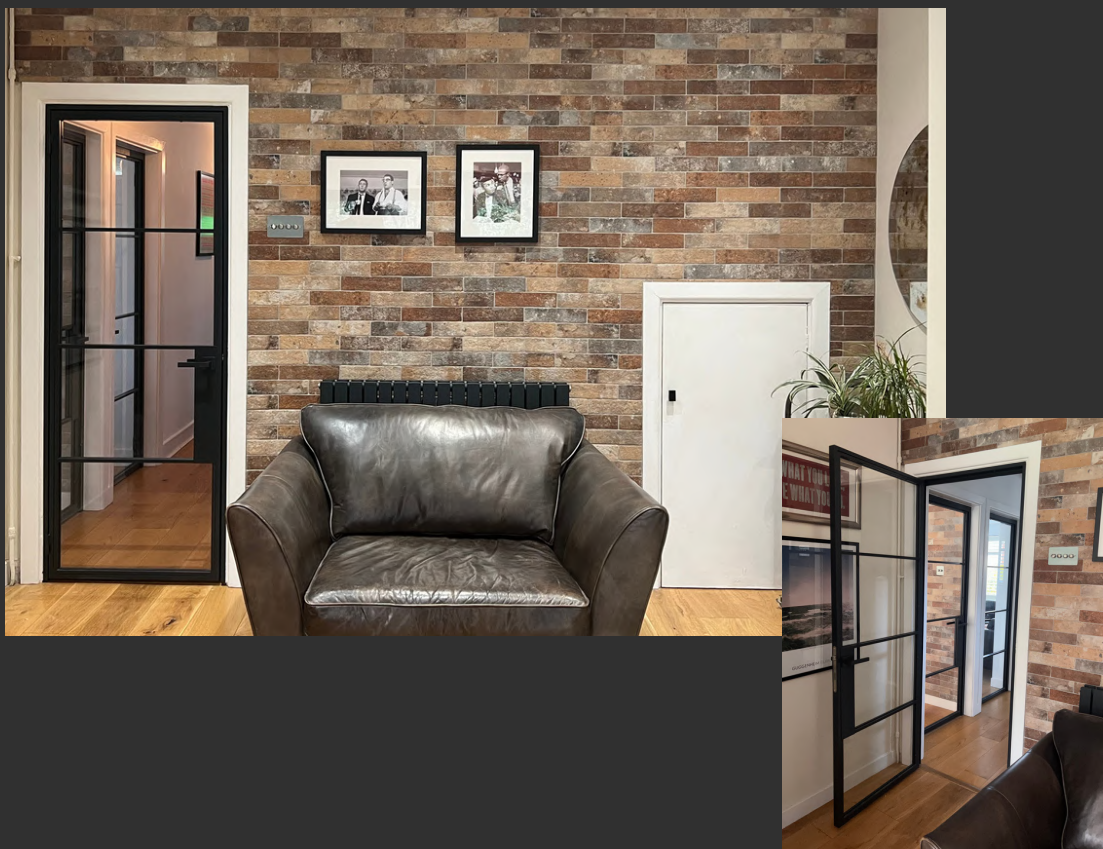
The most popular Cross Bar design for InoCross 20 system is three horizontal bars.

InoCross20

Single Hinged Door

Our Internal Steel Glazed Cross Bar Single Doors offer the perfect solution for both the modern and traditional home. With truly unlimited design possibilities, our InoCross 20 doors are bespoke made to enhance the aesthetics of the individual property they are crafted for.

Boasting an ultra slim frame of just 20mm, they allow natural light to flow throughout any property when both open and closed. Their elegant, slimline design means that they take up minimal space within the property. This can be particularly beneficial in smaller properties or where space is at a premium. With most Heritage style doors being left behind by the time our InoCross20 doors offer a modern take on a traditional market.



Maximum Width:

1100mm

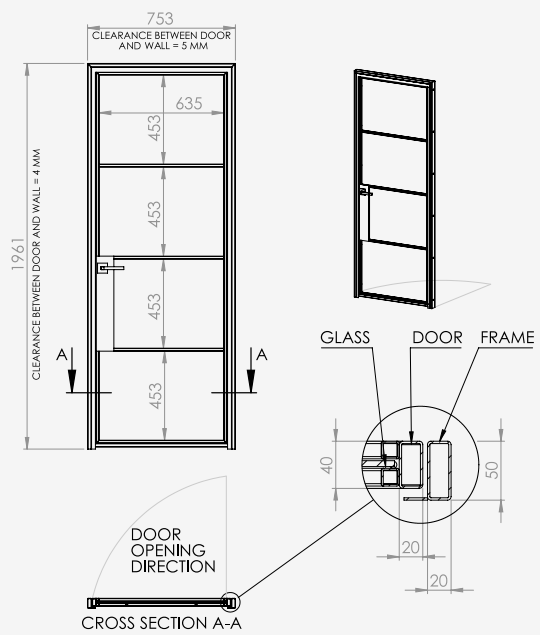
Maximum Height:

Handle Types:

Trim, Linear 300, Linear 600,
Guarded (Page XXX)

Configurations:

- Single Door
- Single Door with Side Screen
- Single Door with Side Screens
- Single Door with Over Panel
- Single Door with Side Screen & Over Panel
- Single Door with Side Screens & Over Panel



InoCross20

*Single Hinged Door
with Side Screen(s)*



Adding side screens to our InoCross20 system opens the door to unlimited design possibilities, allowing light to flow from one space to another, leaving an open and airy feel.

To mirror our doors, our side screens are crafted using a slimline steel profile, maximising sight line. With a 20mm frame and a bead and Cross Bar measuring just 15mm our InoCross20 system is one of the slimmest available to date. It offers the perfect ratio of framework to glass, creating a remarkably, well balanced finish. The use of our Internal Steel Glazed Cross Bar Single Door with Side screens can ultimately divide two spaces while still allowing them to feel connected.

In certain spaces it can make more sense to use a single door with side screen(s) rather than a double door set, this can be for an array of reasons such as the space, functionality or aesthetic.



Maximum Width:

Door: 1100mm
Side Screen: Unlimited

Maximum Height:

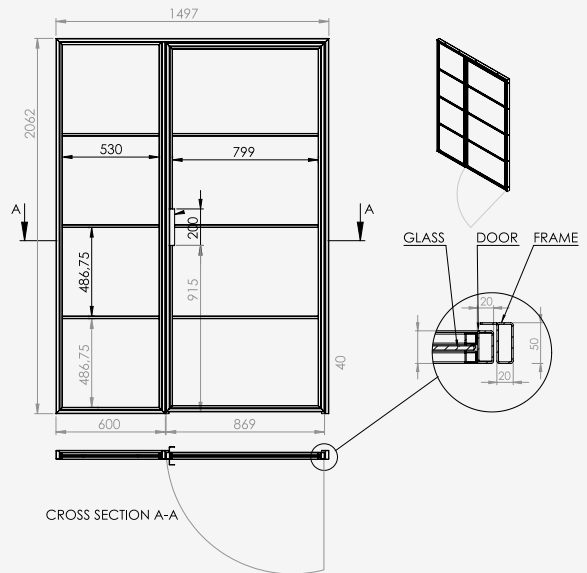
Door: 3000mm
Over Panel: Unlimited

Handle Types:

Trim, Linear 300, Linear 600,
Guarded (Page XXX)

Configurations:

- Single Door
- Single Door with Side Screen
- Single Door with Side Screens
- Single Door with Over Panel
- Single Door with Side Screen & Over Panel
- Single Door with Side Screens & Over Panel



InoCross20 *Double Hinged Door*

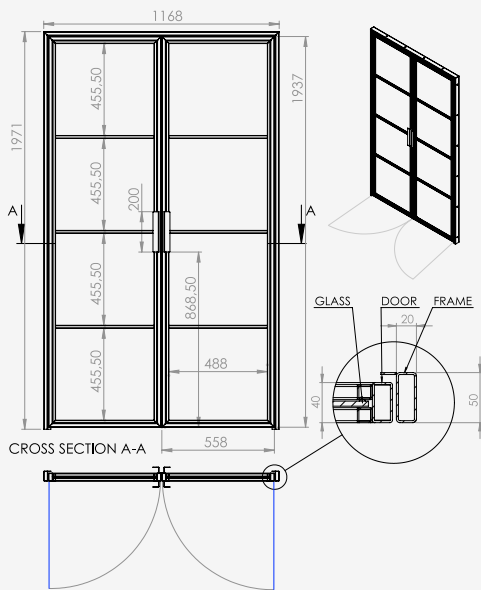


Our Internal Steel Glazed Cross Bar Double Doors are a great way to improve the overall aesthetics of a home. With their classic and timeless look, they provide a range of benefits that can add value and enhance the look and feel of a home. Their sleek and stylish framework adds an element of class to any property, be it modern or traditional.

Not only do they improve the overall aesthetics of a home, they are low maintenance and easy to clean, making them a great choice for homeowners who don't have the time to spend on cleaning.

By allowing natural light to flow between spaces our InoCross20 Double Doors can also improve the energy efficiency of a property, reducing the need for additional artificial lighting.

Heritage style doors were first produced in the 1880's. Most systems available today have not undergone significant innovation or modernization since their original design, they use dated manufacturing techniques which results in an end product which is behind the times. Our primary objective in developing the InoCross20 system was always simple yet effective, to create a updated, slimline door which compliments both the modern and traditional home.



Maximum Width:

1100mm

Maximum Height:

3000mm

Handle Types:

Trim, Linear 300, Linear 600, Guarded (Page XXX)

Configurations:

- Double Door
- Double Door with Side Screen
- Double Door with Side Screens
- Double Door with Over Panel
- Double Door with Side Screen & Over Panel
- Double Door with Side Screens & Over Panel

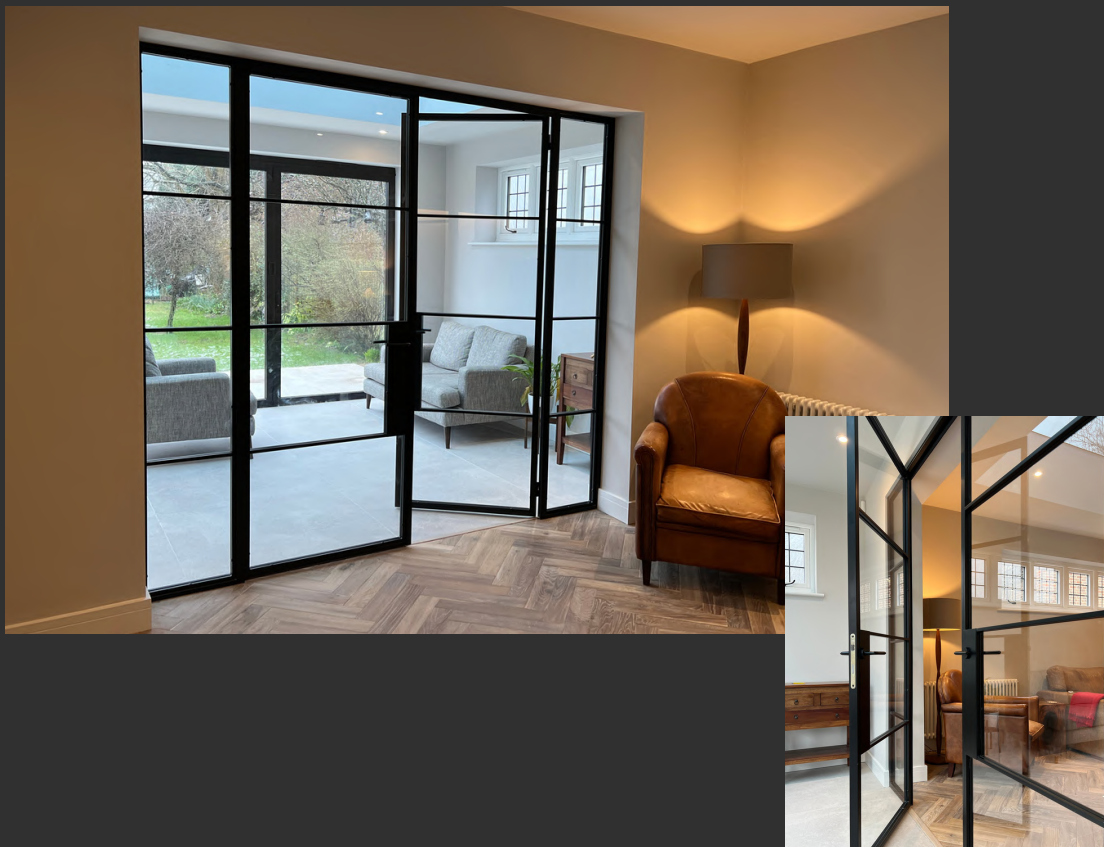
InoCross20

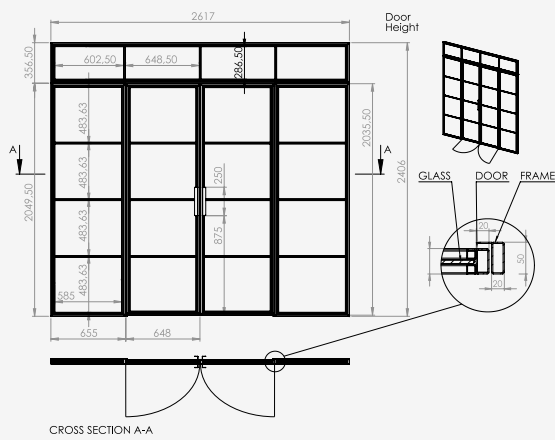
*Double Hinged Door
with Side Screen(s)*

Our InoCross20 Double Hinged Doors with side screens offer the perfect solutions for larger openings. Allowing two spaces to be divided but remain connected simultaneously. They allow natural light to flow between rooms, making a home

The use of 180 degree hinges allow the doors to fold back on themselves, taking up minimal space when both open and closed.

The incorporation of side screens into our InoCross20 system offers boundless opportunities for creative expression, enabling the seamless transmission of light between spaces and creating an open, breezy atmosphere.





Maximum Width:

Door: 1100mm
Side Screen: Unlimited

Maximum Height:

Door: 3000mm
Over Panel: Unlimited

Handle Types:

Handle Types:
Trim, Linear 300, Linear 600,
Guarded (Page XXX)

Configurations:

- Single Door
- Single Door with Side Screen
- Single Door with Side Screens
- Single Door with Over Panel
- Single Door with Side Screen & Over Panel
- Single Door with Side Screens & Over Panel







InoCross20

Single Sliding Door

Our InoCross20 Single Sliding Doors can greatly enhance the aesthetics and functionality of a home. They can create a sense of openness and flow between different areas of the house, while also allowing natural light to penetrate deeper into the space.

Sliding glass doors are also an excellent way to maximize space, as they do not require the same swing clearance as traditional hinged doors.

Additionally, they can provide a sense of privacy and sound insulation when closed, while still maintaining a visual connection between rooms.

Overall, the installation of internal sliding glass doors can help to modernize and improve the overall functionality and appeal of a home.



Maximum Width:

1500mm

Maximum Height:

3000mm

Maximum Sliding Door Weight::

120kg

Handle Types:

Trim, Linear 300, Linear 600,
Guarded (Page XXX)

Configurations:

Single Door

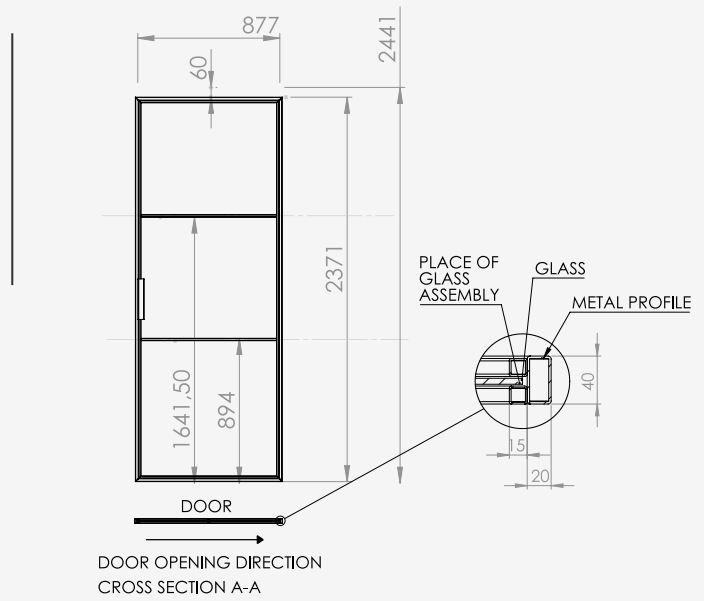
Single Door with Side Screen

Single Door with Side Screens

Single Door with Over Panel

Single Door with Side Screen & Over Panel

Single Door with Side Screens & Over Panel



InoCross20

*Single Sliding Door
with Side Screen(s)*



Adding side screens to our InoCross20 sliding system offers the perfect solution for larger openings, taking up minimal space without compromising on design.

Our Internal Steel Glazed Cross Bar Single Sliding Door with Side Screens can divide two spaces while still maintaining a sense of connection. In certain spaces, using a single sliding door with side screens can be more practical, adding more character than a double door set. Regardless of the application, our InoCross20 system with side screens is sure to add a touch of elegance and modernity to any interior design project.

Requiring no swing clearance our InoCross20 sliding doors are the perfect solution for tighter spaces where our hinged doors might not be practical.

The use of a glass divide allows one space to become two, all while allowing light to flow through, creating an open and airy dynamic.



Maximum Width:

1500mm

Maximum Height:

3000mm

Maximum Sliding Door Weight::

120kg

Handle Types:

Trim, Linear 300, Linear 600,
Guarded (Page XXX)

Configurations:

Single Door

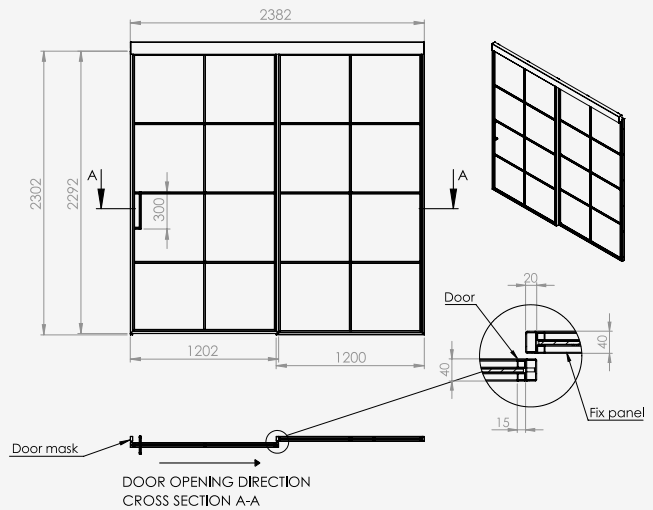
Single Door with Side Screen

Single Door with Side Screens

Single Door with Over Panel

Single Door with Side Screen & Over Panel

Single Door with Side Screens & Over Panel



InoCross20

Double Sliding Door

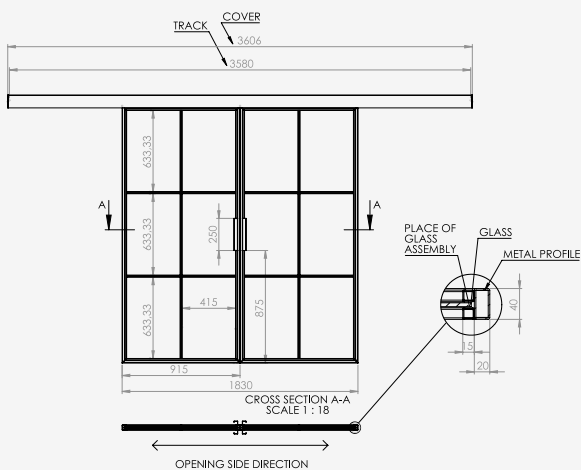


Our Internal Steel Glazed Cross Bar Double Doors offer a fantastic way to enhance the appearance of your home. With their timeless and classic design, they provide numerous benefits that can improve the value and overall ambiance of your property. Their stylish and streamlined framework adds a touch of elegance to any style of home.

Our InoCross20 Sliding doors require minimal maintenance and are easy to clean, making them an excellent option for busy homeowners who don't have much time to spare for cleaning. Additionally, they can enhance the energy efficiency of your property by allowing natural light to flow between spaces, reducing the need for artificial lighting.

As with our entire InoCross20 range, each set are hand crafted, to suit the particular property. This means that the design possibilities are truly endless.

Our InoCross Sliding doors offer an extremely modern take on a traditional market. Combining the Cross Bar glazing style with the modern functionality of a sliding door.



Maximum Width:

1500mm

Maximum Height:

3000mm

Maximum Sliding Door Weight:

120kg

Handle Types:

Trim, Linear 300, Linear 600,
Guarded (Page XXX)

Configurations:

- Single Door
- Single Door with Side Screen
- Single Door with Side Screens
- Single Door with Over Panel
- Single Door with Side Screen & Over Panel
- Single Door with Side Screens & Over Panel

InoCross20

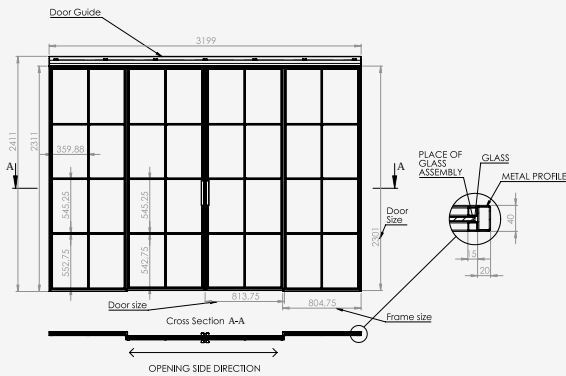
*Double Sliding Door
with Side Screen(s)*

Our InoCross20 Double Sliding Doors is the most effective space saving solution for larger openings. With both doors sliding seamlessly over the side screens, this means that our sliding doors require no clearance to swing open as hinged doors do.

The addition of side screens adapts our sliding system to fit neatly within any opening, maximising the surface area of the glass and allowing natural light to flow between spaces.

Their well balanced, symmetrical design compliments both traditional and modern homes superbly.





Maximum Width:

1500mm

Maximum Height:

3000mm

Maximum Sliding Door Weight:

120kg

Handle Types:

Trim, Linear 300, Linear 600,
Guarded (Page XXX)

Configurations:

- Single Door
- Single Door with Side Screen
- Single Door with Side Screens
- Single Door with Over Panel
- Single Door with Side Screen & Over Panel
- Single Door with Side Screens & Over Panel



Handle *Options*

Door handles are a key feature of any room. The right handle has the ability to accentuate a room's best features, conceal any imperfections, and contribute to a luxury interior that is visually appealing, tactually pleasing, and serves its functional purpose.

Our InoCross20



Guarded

Our Guarded handle offers maximum practicality without having to compromise design or style. Depending on design preference the handle can be placed between bars, creating a larger plate or welded seamlessly from a single cross bar. Featuring a lever latch mechanism, our Guarded handle can be coupled with a lock to enhance home security and functionality.

Trim

Our Trim handle is the most minimalistic of our handle options. Measuring an equitable 250mm x 30mm, neatly welded to the frame around the door it takes up minimal space; it is a client favourite on both our hinged and sliding doors. Our Trim handle compliments the ultra slim profiles of our doors superbly.



Linear 300

Seamlessly welded to the inside of the frame, our Linear 300 handle is the perfect handle for those who prefer a more detailed finish, providing great functionality. Its design allows the user a solid grip while operating the doors.

Linear 600

Identical in design to our Linear 300 handle, apart from its length, our Linear 600 handle is the perfect choice for taller doors. Complimenting their height and presence exquisitely, all while compromising nothing to functionality.



Glass Types

Our InoCross20 doors and fixed screens present an ideal solution for both traditional and modern homes, delivering a luxurious finish to any property. Each of our doors are meticulously handcrafted from cold-rolled steel, offering some of the slimmest profiles available and tailored to meet the specific requirements of each project. With a sleek design that optimizes the flow of natural light, these doors take up minimal space, creating a spacious feel in any room.

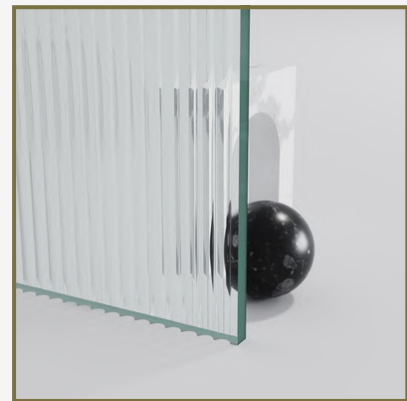


Clear

Clear Glass is a widely used type of glass that allows maximum light transmission between rooms. Its transparent quality adds depth and can enhance the overall aesthetic appeal of any interior space, creating a cohesive and visually pleasing environment.

Reeded

Reeded glass offers several benefits that make it a popular choice in interior design. The textured surface provides a level of privacy without sacrificing natural light. The texture can help to diffuse light, reducing glare and creating a softer, more welcoming ambience. Reeded glass is also a durable and low-maintenance material, making it a practical choice for high-traffic areas or spaces where frequent cleaning is necessary.

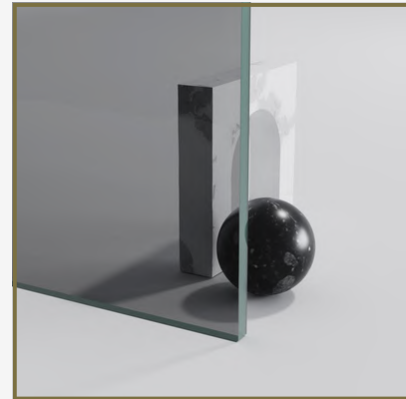


Opaque

Opaque glass has several benefits that make it a popular choice in interior design. Its translucent quality provides privacy while still allowing light to pass through, making it an ideal option for areas where privacy is desired. This makes it perfect for bathrooms, bedrooms, or even conference rooms. The frosted effect also creates a unique visual element that can add a touch of elegance to any space.

Grey Tint

Grey tinted glass offers several benefits that make it a popular choice in interior and architectural design. The tinted glass provides a reduction in glare and the transfer of heat, making it an ideal option for areas where temperature control and energy efficiency are important factors. The grey tint also provides a stylish and modern aesthetic and can add a touch of sophistication to any space.

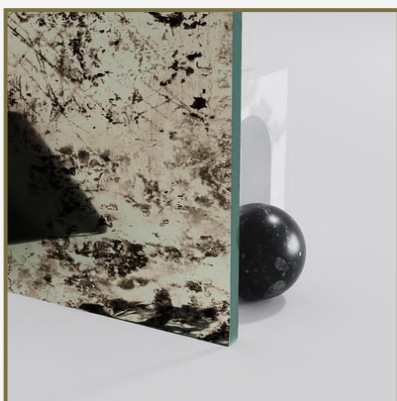
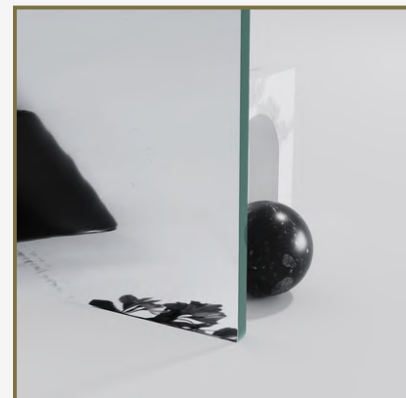


Diffused

Diffused glass, also referred to as milk glass offers a range of benefits in various applications. One of the main advantages of diffused glass is its ability to provide privacy by completely blocking light from passing through. This makes it an ideal choice for use in bathrooms, cloakrooms, pantries, closets or wardrobes.

Silver Mirror

Mirrored glass offers a range of benefits, one of the main advantages of mirrored glass doors is their ability to create the illusion of space and openness. The reflection of light creates the impression of a larger room, making them a popular choice for closets, and bedrooms. The use of mirrored glass can be used as a decorative element, adding an element of glamour and sophistication to any space.

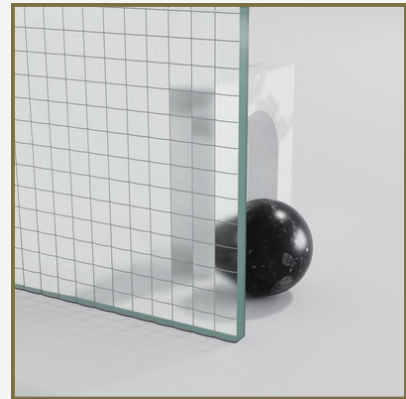


Antique Mirror

Antique mirrored glass offers a unique and sophisticated look that can add character and charm to any space. One of the main benefits of antique mirrored glass doors is their ability to create a sense of history and nostalgia, adding a touch of vintage elegance to any room. The reflective properties of antique mirrored glass can create a beautiful interplay of light and shadow, adding a sense of depth and dimension to a space.

Georgian Wire

Georgian wire glass, also known as safety glass, is a type of glass that has wire mesh embedded within it to increase its strength and durability. The wire mesh is typically made of steel and is placed in between two layers of glass during the manufacturing process.





RAL

Colours

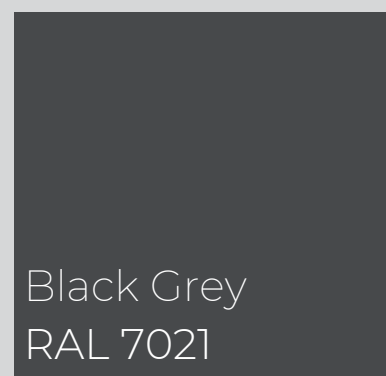
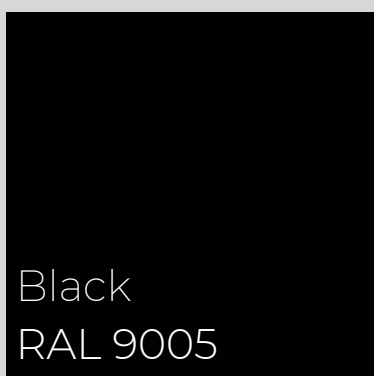
When it comes to choosing the right doors for your space, design and durability are two key factors to consider. Our InoCross20 doors excel in both areas, thanks to their exceptional design flexibility and high-quality powder-coated finish.

With InoCross20 doors, you have complete control over the look and feel of your doors. You can choose from any four digit RAL colour code to achieve the perfect match for your design scheme. Whether you need a bold, eye-catching colour or a more subdued tone to complement your space, InoCross20 doors offer the ultimate flexibility in design.

In addition to their aesthetic benefits, InoCross20 doors are also built to last. Our doors are expertly powder-coated, which involves applying a layer of dry powder to the surface and then heating it to create a durable, protective finish. This process not only makes the doors resistant to scratches and chips, but also protects against the damaging effects of moisture.

So, when you choose InoCross20 doors, you're not only getting a door that looks great, but one that is built to stand the test of time.

Popular Choices:



RAL inspiration:

 <p>Pale Beige RAL 1001</p>	 <p>Brown Black RAL 1011</p>	 <p>Pearl White RAL 1013</p>	 <p>Dark Ivory RAL 1014</p>	 <p>Light Ivory RAL 1015</p>
 <p>Grey Beige RAL 1019</p>	 <p>Grey Olive RAL 6006</p>	 <p>Bottle Green RAL 6007</p>	 <p>Brown Green RAL 6008</p>	 <p>Fir Green RAL 6009</p>
 <p>Silver Grey RAL 7001</p>	 <p>Olive Grey RAL 7002</p>	 <p>Iron Grey RAL 7011</p>	 <p>Umber Grey RAL 7022</p>	 <p>Cream RAL 9001</p>
 <p>Grey White RAL 9002</p>	 <p>Signal White RAL 9003</p>	 <p>Signal Black RAL 9004</p>	 <p>Pure White RAL 9010</p>	 <p>Graphite Black RAL 9011</p>



Anthracite Grey
RAL 7016



Light Ivory
RAL 1015



Black
RAL 9005





JOSHUA  JAMES
CONTEMPORARY GLASS SPECIALISTS