

COMPLETED PROJECT

---

WWW.JOSHUAJAMESLTD.CO.UK



# JOSHUA JAMES LTD.

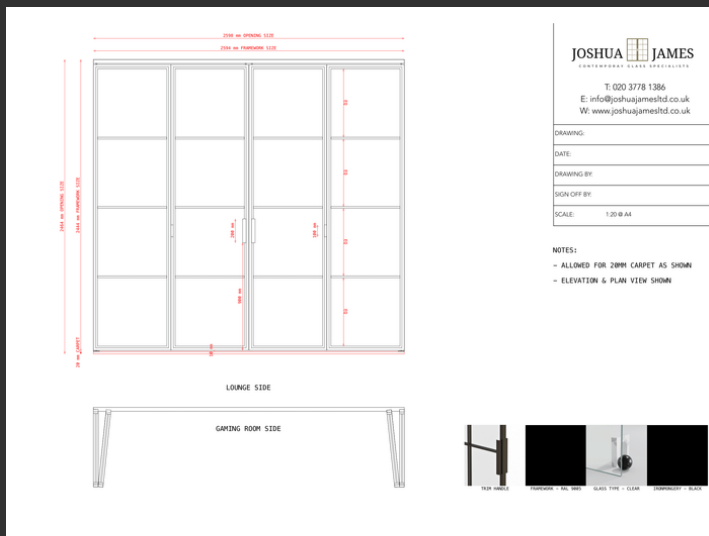
## 2023

FOUR PANEL DOUBLE BIFOLD DOOR  
SINGLE DOOR WITH ACCESS PANEL  
ROMFORD, ESSEX

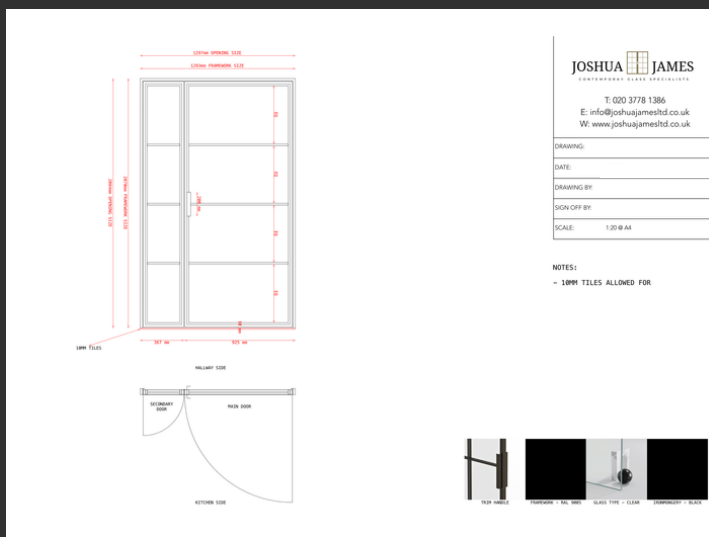
LEAD TIME:  
6 WEEKS

PROJECT VALUE:  
£8,350 + VAT

# Design.



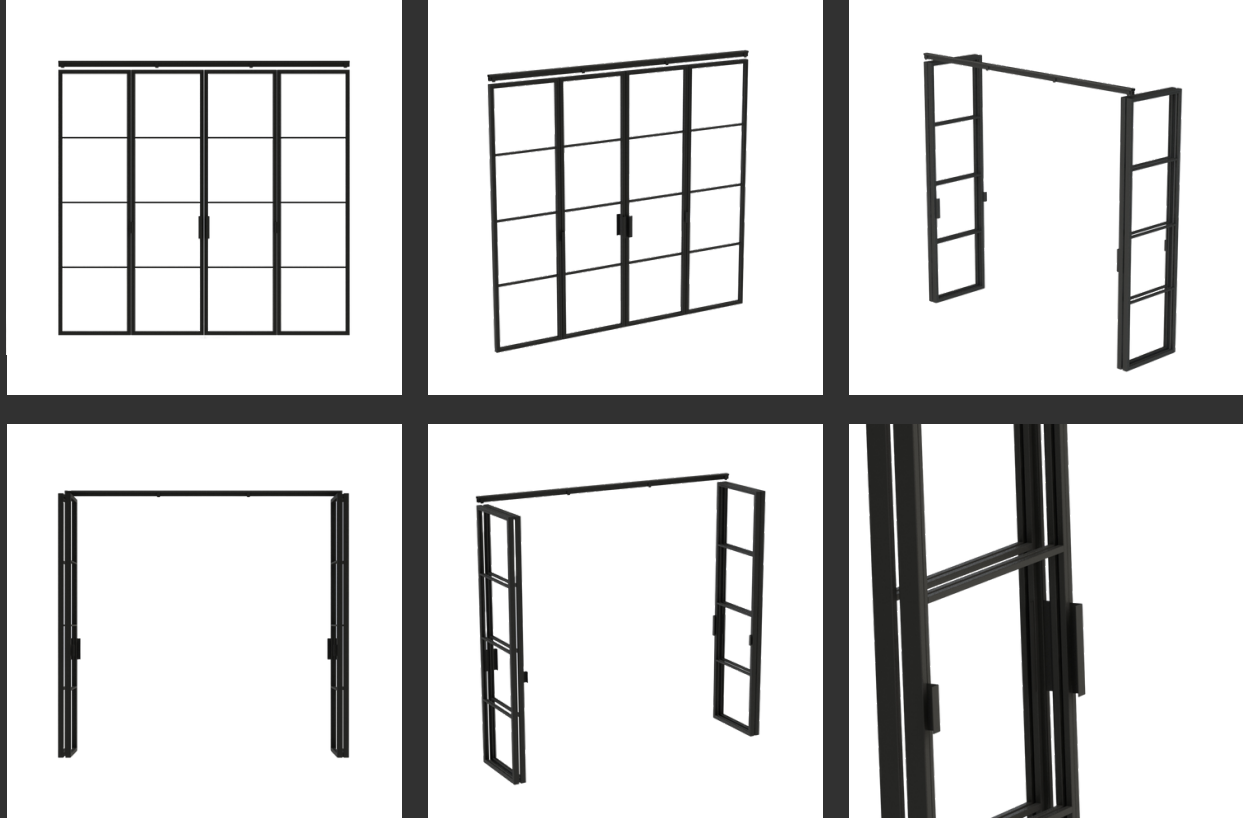
During the Romford project, our client requested the installation of two new doors as part of a comprehensive refurbishment that included an extension, a new kitchen and bathrooms, and landscaping for both gardens. The property underwent a remarkable transformation, becoming almost unrecognisable upon completion.



We engaged with the client early on, understanding her specific requirements and vision for the project. The careful selection and installation of the doors, in harmony with the overall design, added elegance and practicality to the renovated home. The successful collaboration, planning, and personalised solutions exemplify our commitment to excellence in every aspect of our work.

FOUR PANEL DOUBLE BIFOLD DOOR  
SINGLE DOOR WITH ACCESS PANEL  
ROMFORD, ESSEX

FOUR PANEL DOUBLE BIFOLD DOOR



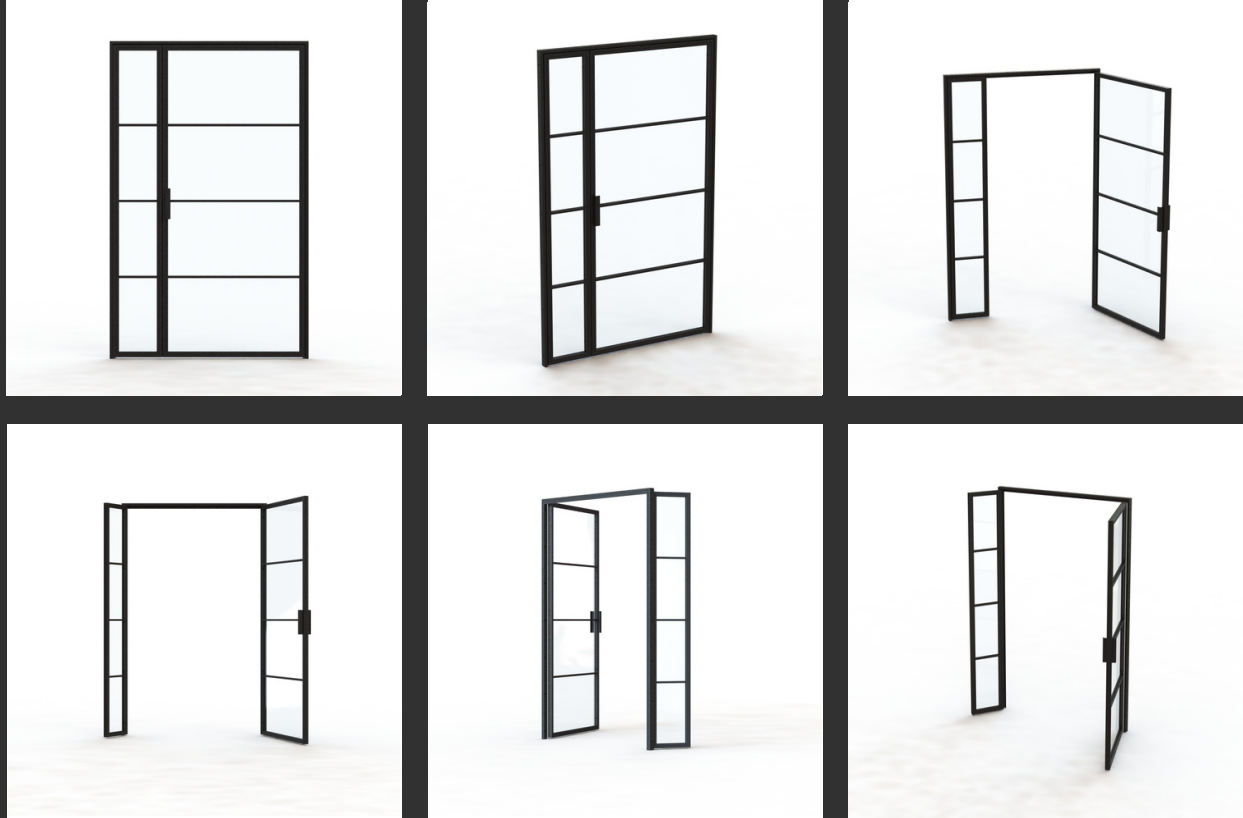
Our client had a specific vision for the aperture between her front living room/movie room and the children's playroom. She wanted a solution that would effectively divide the two spaces while allowing her to maintain a clear view of her children playing while she relaxed in the living room. In addition, she emphasized the importance of having the option to fully close the space or open it as wide as possible.

After carefully considering her requirements, we recommended our InoCross20 Bifolding Door as the ideal solution. With its slender profile of 20mm and a minimal 15mm reveal, our door stands out as one of the slimmest bifold systems available. The top-hung design eliminated the need for a floor track, allowing the carpet to seamlessly flow between the two areas without any obstructions. This feature not only enhanced the visual continuity of the space but also ensured that the client's underfloor heating plans remained unhampered.

Choosing our InoCross20 Bifold Door granted our client the perfect balance of form and function. The slim profile provided an unobtrusive barrier between the living room and the playroom, while still allowing a connection between the two spaces. Its smooth operation and wide opening capability offered the versatility she desired, giving her the freedom to adapt the area to her family's needs.

FOUR PANEL DOUBLE BIFOLD DOOR  
SINGLE DOOR WITH ACCESS PANEL  
ROMFORD, ESSEX

SINGLE DOOR WITH ACCESS PANEL



The client had a specific requirement for a second door to divide her hallway from the open-planned kitchen/living area. Initially, she envisioned a grand entrance with a double hinged door set, aiming to create an impressive transition between the spaces. However, taking into consideration the layout of her furnishings and the size of the aperture, we proposed an alternative solution – a single door with an access panel.

Opting for a single door with an access panel offered the perfect balance of functionality and elegance. It allowed the client to fully open up the space for easy furniture movement and to accommodate parties, while at the same time, it didn't interfere with the surrounding furniture during everyday use. The chosen design seamlessly blended into the overall aesthetics of the area, providing a sophisticated division that complemented the client's vision for her home.

The final result was a seamless and stylish partition between the hallway and the open-planned kitchen/living area, enhancing both the visual appeal and the practicality of the space. This collaboration exemplified our commitment to understanding the client's unique requirements and providing tailored solutions that transformed her living space into a functional and inviting home.

FOUR PANEL DOUBLE BIFOLD DOOR  
SINGLE DOOR WITH ACCESS PANEL  
ROMFORD, ESSEX

# Project Photos.

## FOUR PANEL DOUBLE BIFOLDING DOOR SET



The finished result of our InoCross20 Bifold Door left the client not just satisfied, but truly delighted with the transformation they brought to her home.

The doors proved to be the perfect solution for dividing the two rooms at the front of the property, a feat achieved with both elegance and functionality. When we initially presented the concept of using InoCross20 Bifold Door to create the division, the client was intrigued by the idea of having a flexible and visually appealing solution.

The sleek 20mm profile and the minimal 15mm reveal of these doors added a touch of modernity and sophistication to the space.

Once installed, the impact was nothing short of breathtaking. The doors provided a graceful partition between the rooms, offering privacy when needed while preserving an open and connected ambiance. The client was particularly pleased with how the doors seamlessly integrated into the overall design of her home.

During family gatherings and parties, the doors truly showcased their versatility.

FOUR PANEL DOUBLE BIFOLD DOOR  
SINGLE DOOR WITH ACCESS PANEL  
ROMFORD, ESSEX

SINGLE DOOR WITH ACCESS PANEL



The single door with an access panel exceeded the client's expectations, providing an elegant and seamless partition between the hallway and kitchen/rear living area.

The door's versatility, effortless operation, and flawless integration into the design left the client truly impressed. By fully opening the door, the spaces merged into one expansive area, perfect for gatherings and a warm ambiance.

On quieter days, the single door provides ample access with the access panel locked shut.

The door's convenience and stylish appearance added to the overall functionality and charm of her home by allowing natural light to flood into the property from the rear, creating a warm welcome.

FOUR PANEL DOUBLE BIFOLD DOOR  
SINGLE DOOR WITH ACCESS PANEL  
ROMFORD, ESSEX



FOUR PANEL DOUBLE BIFOLD DOOR  
SINGLE DOOR WITH ACCESS PANEL  
ROMFORD, ESSEX

# CLIENTS COMMENT.

---



"We spent months researching a very specific type of steel door, which is more prevalent on the continent but very tricky to find in the UK. We nearly gave up the hunt before we came across Joshua James Ltd. We're so glad that we did. The team were an absolute delight to work with, both pre-sale, during installation and post-sale. Knowledgeable, responsive and a high-quality end product. I wish all glazing manufacturers worked to this standard!"



COMPLETED PROJECT

# CONTACT US TODAY.

RECEIVE YOUR  
FREE QUOTE  
INSTANTLY.

W: [www.joshuajamesltd.co.uk](http://www.joshuajamesltd.co.uk)

E: [info@joshuajamesltd.co.uk](mailto:info@joshuajamesltd.co.uk)

T: 020 3778 1386

JOSHUA  JAMES  
CONTEMPORARY GLASS SPECIALISTS

---